

FT. W. & D. R. R.
LOCOMOTIVE DIAGRAMS

FOLIO 100



W. C. MURPHY

CHIEF CLERK



MAILING LIST

LOCOMOTIVE FOLIO

FILE 306

R. Budd, President, Chicago (1 Copy for ICC)	3 4
J. A. Hulen, Vice-President.	1
J. B. Farrington , General Manager.	2
C. D. Pack H. E. Goodwin, Chief Clerk	1
H. W. Ridgway, Supt. Motive Power, Denver.	1
R. C. Gowdy, Chief Engineer, Denver.	1
S. A. Covington, Superintendent, Wichita Falls	1
J. W. Mode, Superintendent, Amarillo	1
M. A. Stainer, Engr. Maintenance of Way.	2
Transportation Clerk	1
H. B. Ruch, Auditor of Expenditures.	1
H. E. Hinds, Chicago	1
E. C. Anderson, Mech. Engineer, Chicago.	1
E. Flynn E. P. Bracken , Vice-President, Chicago	1
J. H. Reisse, Mech. Asst. to Vice-Pres., Chicago	1
H. H. Urbach, Supt. Motive Power, ^{Hawelock} Chicago.	1
J. Pfeiffer, Supt. Motive Power.	2
Folio.	2

LOCOMOTIVE CLASSIFICATION

WHITES SYSTEM		C&O	INTERSTATE COMMERCE COMMISSION AND F.W.&D.	
4 WHEEL SWITCHER	0-4-0	E	A 2	⊕⊕L
6 " "	0-6-0	G	A 3	⊕⊕⊕L
8 " "	0-8-0	F	A 4	⊕⊕⊕⊕L
10 " "	0-10-0	L	A 5	⊕⊕⊕⊕⊕L
4 COUPLED	2-4-0		B 2	⊕⊕⊕Δ
MOGUL	2-6-0	H	B 3	⊕⊕⊕⊕Δ
CONSOLIDATION	2-8-0	D	B 4	⊕⊕⊕⊕⊕Δ
DECAPOD	2-10-0		B 5	⊕⊕⊕⊕⊕⊕Δ
8 WHEEL	4-4-0	A	C 2	⊕⊕⊕⊕Δ
10 WHEEL	4-6-0	K	C 3	⊕⊕⊕⊕⊕Δ
12 WHEEL	4-8-0		C 4	⊕⊕⊕⊕⊕⊕Δ
6 COUPLED & TRAIL.	0-6-2		D 3	⊕⊕⊕⊕Δ
COLUMBIA	2-4-2		E 2	⊕⊕⊕⊕Δ
PRAIRIE	2-6-2	R	E 3	⊕⊕⊕⊕⊕Δ
MIKADO	2-8-2	O	E 4	⊕⊕⊕⊕⊕⊕Δ
SANTA FE	2-10-2	M	E 5	⊕⊕⊕⊕⊕⊕⊕Δ
ATLANTIC	4-4-2	P	F 2	⊕⊕⊕⊕⊕Δ
PACIFIC	4-6-2	S	F 3	⊕⊕⊕⊕⊕⊕Δ
MOUNTAIN	4-8-2	B	F 4	⊕⊕⊕⊕⊕⊕⊕Δ
FORNEY 4 COUPLED	0-4-4		G 2	⊕⊕⊕⊕Δ
FORNEY 6 COUPLED	0-6-4		G 3	⊕⊕⊕⊕⊕Δ
4 COUPLED	2-4-4		H 2	⊕⊕⊕⊕⊕Δ
6 COUPLED	2-6-4		H 3	⊕⊕⊕⊕⊕⊕Δ
BERKSHIRE	2-8-4		H 4	⊕⊕⊕⊕⊕⊕⊕Δ
TEXAS	2-10-4	M	H 5	⊕⊕⊕⊕⊕⊕⊕⊕Δ
HUDSON	4-6-4	S	I 3	⊕⊕⊕⊕⊕⊕Δ
	4-8-4	O	I 4	⊕⊕⊕⊕⊕⊕⊕Δ
ARTICULATED	2-8-2	T		⊕⊕⊕⊕⊕⊕⊕⊕⊕
ARTICULATED	2-6-2	T		⊕⊕⊕⊕⊕⊕⊕⊕

REVISED

REV. APR. 1935

MAR. 1937

MAR. 1939

JUNE 1941

FUEL CAPACITIES OF TENDERS IN GALLONS OF OIL & TONS OF COAL

ENGINE	CAPACITY	ENGINE	CAPACITY	ENGINE	CAPACITY	ENGINE	CAPACITY	ENGINE	CAPACITY	ENGINE	CAPACITY
38	2500 GAL'S	155 *				404	4050 GAL'S	461	4300 GAL'S		
50	2600 "	157	3600 GAL'S	264	3600 GAL'S	405	4050 "	462	4300 "		
51	2600 "	202	3420 "			406	4050 "	463	4300 "		
		205	4100 "			407	4050 "	464	4300 "		
		206	3420 "	302	3600 GAL'S	408	4050 "	465	4300 "		
64	2600 "	207	4100 "	304	2600 GAL'S	409	4050 "	501	4100 "		
65	2600 "	208	3420 "	305	3600 "	410	4050 "	502	4100 "		
		211	3420 "	306	2600 GAL'S	451	4300 GAL'S	503	4100 GAL'S		
67	1580 "	250	3600 "	308	2600 "	452	4300 "	504	4100 "		
68	2600 "			310	4100 "	453	4300 "	551	4000 GAL'S		
69	2600 "			311	3600 "	454	4300 "	552	4000 "		
				312	3600 "	455	4300 "	553	4000 "		
150	3600 "			313	3600 "	456	4300 "	554	4000 "		
				314	3600 "	457	4300 "	555	4000 "		
152	3600 GAL'S			401	4050 "	458	4300 "	556	4000 "		
				402	4050 "	459	4300 "	557	4000 "		
154 *				403	4050 "	460	4300 "				

* - TANKS TEMPORARY BEHIND ENGINES.

REVISED
 APR. 1935
 MAR. 1937
 MAR. 1939
 JUNE 1941

LOCOMOTIVE AIR COMPRESSORS

ENG.	NO	KIND	STYLE	ENG.	NO	KIND	STYLE	ENG.	NO	KIND	STYLE	ENG.	NO	KIND	STYLE
38	1	WEST. H.	9½"	207	1	WEST. H.	8½" C.C.	314	2	NY. & W.H.	Nº 5 & 9½"	460	1	WEST. H.	8½" C.C.
50	2	" "	9½"	208	1	" "	8½" C.C.	401	1	WEST. H.	8½" C.C.	461	1	" "	8½" C.C.
51	2	" "	9½"	211	1	" "	8½" C.C.	402	1	" "	8½" C.C.	462	1	" "	8½" C.C.
60	2	" "	9½"	250	1	NEW YORK	Nº 5 DUP	403	1	" "	8½" C.C.	463	1	" "	8½" C.C.
64	2	" "	9½"	251	1	" "	Nº 5 DUP	404	1	" "	8½" C.C.	464	1	" "	8½" C.C.
65	2	" "	9½"	252	1	" "	Nº 5 DUP	405	1	" "	8½" C.C.	465	1	" "	8½" C.C.
66	2	" "	9½"					406	1	" "	8½" C.C.	501	1	" "	8½" C.C.
67	2	" "	9½"					407	1	" "	8½" C.C.	502	1	" "	8½" C.C.
68	2	" "	9½"	264	1	" "	Nº 5 DUP	408	1	" "	8½" C.C.	503	1	" "	8½" C.C.
69	2	" "	9½"					409	1	" "	8½" C.C.	504	1	" "	8½" C.C.
150	1	NEW YORK	Nº 6 DUP					410	1	" "	8½" C.C.	551	2	" "	8½" C.C.
151	2	NY. & W.H.	Nº 6 & 9½"	302	1	WEST. H.	8½" C.C.	451	1	" "	8½" C.C.	552	2	" "	8½" C.C.
152	1	NEW YORK	Nº 5 DUP	304	2	NY. & W.H.	Nº 5 & 9½"	452	1	" "	8½" C.C.	553	2	" "	8½" C.C.
153	1	" "	Nº 6 DUP	305	1	WEST. H.	8½" C.C.	453	1	" "	8½" C.C.	554	2	" "	8½" C.C.
154	1	" "	Nº 5 DUP	306	2	WEST. H.	8½" C.C. & 9½"	454	1	" "	8½" C.C.	555	2	" "	8½" C.C.
155	2	NY. & W.H.	Nº 6 & 9½"	308	2	" "	8½" C.C. & 9½"	455	1	" "	8½" C.C.	556	2	" "	8½" C.C.
157	1	WEST. H.	8½" C.C.	310	2	NY. & W.H.	Nº 5 & 9½"	456	1	" "	8½" C.C.	557	2	" "	8½" C.C.
202	1	" "	8½" C.C.	311	1	WEST. H.	8½" C.C.	457	1	" "	8½" C.C.				
205	1	" "	8½" C.C.	312	2	NY. & W.H.	Nº 5 & 9½"	458	1	" "	8½" C.C.				
206	1	" "	8½" C.C.	313	2	" "	Nº 5 & 9½"	459	1	" "	8½" C.C.				

REVISED
 APRIL 1935
 MAR. 1937
 JUNE 1941

FORT WORTH & DENVER CITY RY. CO.

NUMBER	CLASS	BUILDER	DATE BUILT	BUILDERS NUMBER	BOILER PRESSURE	WT. ON DRIVERS	TOTAL WEIGHT	SERVICE	REMARKS.
38	C-2-K	SCHENECTADY	1885		150Lbs.	59,600	93,500	PASS.	CONVERTED TO OIL 2-28-23
50	A-3-F	" Am. Loc. Co.	Nov. 1906	42,265	200LBS.	145,000	145,000	SWITCH	" " " 4-24-17
51	A-3-F	" " " "	Nov. 1906	42,266	200LBS.	145,000	145,000	"	" " " 4-11-17
60	A-3-E-1	RICHMOND	" " "	JUNE 1907	44,925	195 "	141,700	"	" " " 4-17-20
64	A-3-E-1	" " " "	" 1908	45,566	195 "	141,700	141,700	"	" " " 12-31-24
65	A-3-E-1	" " " "	" 1908	45,567	195 "	141,700	141,700	"	" " " 4-8-17
66	A-3-E-1	" " " "	" 1908	45,568	195 "	141,700	141,700	"	" " " 4-27-17
67	A-3-E-1	" " " "	" 1908	45,569	195 "	141,700	141,700	"	" " " 5-16-17
68	A-3-E-2	BALDWIN LOCO. WORKS	SEPT. 1910	35,270	195 "	145,600	145,600	"	" " " 8-14-17
69	A-3-E-2	" " "	" 1910	35,271	195 "	145,600	145,600	"	" " " 7-10-17
150	C-3-H	BROOKS WORKS Am. Loc. Co.	JUNE 1906	40,229	200 "	141,000	173,775	PASS.	" " " FEB. 1928
151	C-3-H	" " " " "	" 1906	40,230	200 "	141,000	173,775	"	" " " JULY 1928
152	C-3-H	" " " " "	" 1906	40,231	200 "	141,000	173,775	"	" " " AUG. 1928
153	C-3-H	" " " " "	" 1906	40,232	200 "	141,000	173,775	"	" " " MAY 1928
154	C-3-H	" " " " "	" 1906	40,233	200 "	141,000	173,775	"	" " " 3-18-22
155	C-3-H	" " " " "	" 1906	40,234	200 "	141,000	173,775	"	" " " 1-20-22

REVISED
 APRIL 1935
 MAR. 1937
 JUNE 1941

FORT WORTH & DENVER CITY RY. CO.

NUMBER	CLASS	BUILDER	DATE BUILT	BUILDERS NUMBER	BOILER PRESSURE	WT. ON DRIVERS	TOTAL WEIGHT	SERVICE	REMARKS
157	C-3-H-1	RICHMOND WKS. AM. Loc. Co	JUNE 1907	42,924	200 LBS.	146,500	187,700	PASS.	CONVERTED TO OIL 12-10-21
202	B-4-0	RHODE ISLAND WKS. " " "	1903	27,059	200 "	142,000	158,000	FREIGHT	" " " 9-24-25
205	B-4-0	" " " " " "	1903	25,147	200 "	142,000	158,000	"	" " " 8-4-25
206	B-4-0	" " " " " "	1903	25,148	200 "	142,000	158,000	"	" " " 8-21-25
207	B-4-0	" " " " " "	1903	25,149	200 "	142,000	158,000	"	" " " 6-25-25
208	B-4-0	" " " " " "	1903	25,150	200 "	142,000	158,000	"	" " " 4-21-24
211	B-4-0	" " " " " "	1903	25,153	200 "	142,000	158,000	"	" " " 6-19-22
250	B-4-Q	ROGERS WORKS " " "	MAY 1906	40,737	200 "	157,000	175,000	"	" " " 1-13-22
251	B-4-Q	" " " " " "	MAY 1906	40,738	200 "	157,000	175,000	"	" " " 1-7-25
252	B-4-Q	" " " " " "	MAY 1906	40,739	200 "	157,000	175,000	"	" " " 4-31-20
259	B-4-Q-1	RICHMOND WORKS " " "	MAY 1907	42,936	200 "	165,000	185,000	"	" " " 2-9-17
263	B-4-Q-1	" " " " " "	JULY 1908	45,562	200 "	165,000	185,000	"	" " " DEC 1931
264	B-4-Q-1	" " " " " "	AUG. 1908	45,563	200 "	165,000	185,000	"	" " " " 1931
265	B-4-Q-1	" " " " " "	AUG 1908	45,564	200 "	165,000	185,000	"	" " " " 1931
266	B-4-Q-1	BALDWIN LOCO. WORKS	OCT. 1907	31,835	200 "	165,000	185,000	"	CONVERTED TO OIL 3-1-17 - FORMERLY T. & D. V. ENG. 58

REVISED
 APRIL 1935
 MAR. 1939
 JUNE 1941

FORT WORTH & DENVER CITY RY. CO.

NUMBER	CLASS	BUILDER	DATE BUILT	BUILDERS NUMBER	BOILER PRESSURE	WT. ON DRIVERS	TOTAL WEIGHT	SERVICE	REMARKS.
302	B-4-R	BROOKS WKS. AM. LOC. CO.	JULY 1906	40,244	200 LBS.	180,795	200,854	FREIGHT	SUPERHEAT DEC. 1921-OIL JUNE 1929
304	B-4-R	" " " " "	" 1906	40,246	200 "	180,795	200,854	"	" MAY 1924 " JULY 1929
305	B-4-R	" " " " "	" 1906	40,247	200 "	180,795	200,854	"	" DEC. 1920 " JULY 1929
306	B-4-R	" " " " "	" 1906	40,248	200 "	180,795	200,854	"	" MAY 1923 " NOV. 1927
308	B-4-R	" " " " "	" 1906	40,250	200 "	180,795	200,854	"	" MAR. 1922 " MAY 1929
310	B-4-R-1	RICHMOND WKS. " " "	AUG. 1908	45,570	200 "	181,295	202,204	"	" NOV. 1925 " FEB. 1920
311	B-4-R-1	" " " " "	" 1908	45,571	200 "	181,295	202,204	"	" OCT. 1926 " OCT. 1931
312	B-4-R-1	" " " " "	" 1908	45,572	200 "	181,295	202,204	"	" DEC. 1926 " FEB. 1932
313	B-4-R-1	" " " " "	" 1908	45,573	200 "	181,295	202,204	"	" AUG. 1926 " NOV. 1927
314	B-4-R-1	" " " " "	" 1908	45,574	200 "	180,559	201,468	"	" MAR. 1926 " JAN. 1920
401	E-4-A-1	BALDWIN LOCO. WORKS	JUNE 1915	42,097	200 "	214,300	274,000	"	
402	E-4-A-1	" " " "	" 1915	42,098	200 "	214,300	274,000	"	
403	E-4-A-1	" " " "	" 1915	42,099	200 "	213,425	273,125	"	
404	E-4-A-1	" " " "	" 1915	42,100	200 "	214,300	274,000	"	
405	E-4-A-1	" " " "	" 1915	42,101	200 "	214,300	274,000	"	
406	E-4-A-1	" " " "	" 1915	42,121	200 "	214,300	274,000	"	

REVISED
 APRIL 1935
 JUNE 1941

FORT WORTH & DENVER CITY RY. CO.

NUMBER	CLASS	BUILDER	DATE BUILT	BUILDERS NUMBER	BOILER PRESSURE	WT. ON DRIVERS	TOTAL WEIGHT	SERVICE	REMARKS
407	E-4-A-1	BALDWIN LOCO. WORKS	JUNE 1915	42,122	200 LBS.	214,300	274,000	FREIGHT	
408	E-4-A-1	" " "	" 1915	42,123	200 "	214,300	274,000	"	
409	E-4-A-1	" " "	" 1915	42,124	200 "	213,425	273,125	"	
410	E-4-A-1	" " "	" 1915	42,125	200 "	213,425	273,125	"	
451	E-4-A-2	" " "	APR. 1919	51,650	200 "	238,500	319,500	"	CONVERTED TO OIL 5-20-21
452	E-4-A-2	" " "	" 1919	51,651	200 "	238,500	319,500	"	" " " 4-28-21
453	E-4-A-2	" " "	" 1919	51,652	200 "	238,500	319,500	"	" " " 4-30-21
454	E-4-A-2	" " "	" 1919	51,701	200 "	238,500	319,500	"	" " " 4-8-21
455	E-4-A-2	" " "	MAY 1919	51,725	200 "	238,500	319,500	"	" " " 3-17-21
456	E-4-A-3	" " "	" 1920	53,165	200 "	240,075	320,075	"	
457	E-4-A-3	" " "	" 1920	53,230	200 "	240,075	320,075	"	
458	E-4-A-3	" " "	" 1920	53,231	200 "	240,075	320,075	"	
459	E-4-A-3	" " "	" 1920	53,232	200 "	240,075	320,075	"	
460	E-4-A-3	" " "	" 1920	53,250	200 "	240,075	320,075	"	
461	E-4-A-4	" " "	JUNE 1922	55,516	200 "	243,485	327,775	"	
462	E-4-A-4	" " "	" 1922	55,562	200 "	243,485	327,775	"	

REVISED
APR. 1935

MAR. 1937

MAR. 1939

JUNE 1941

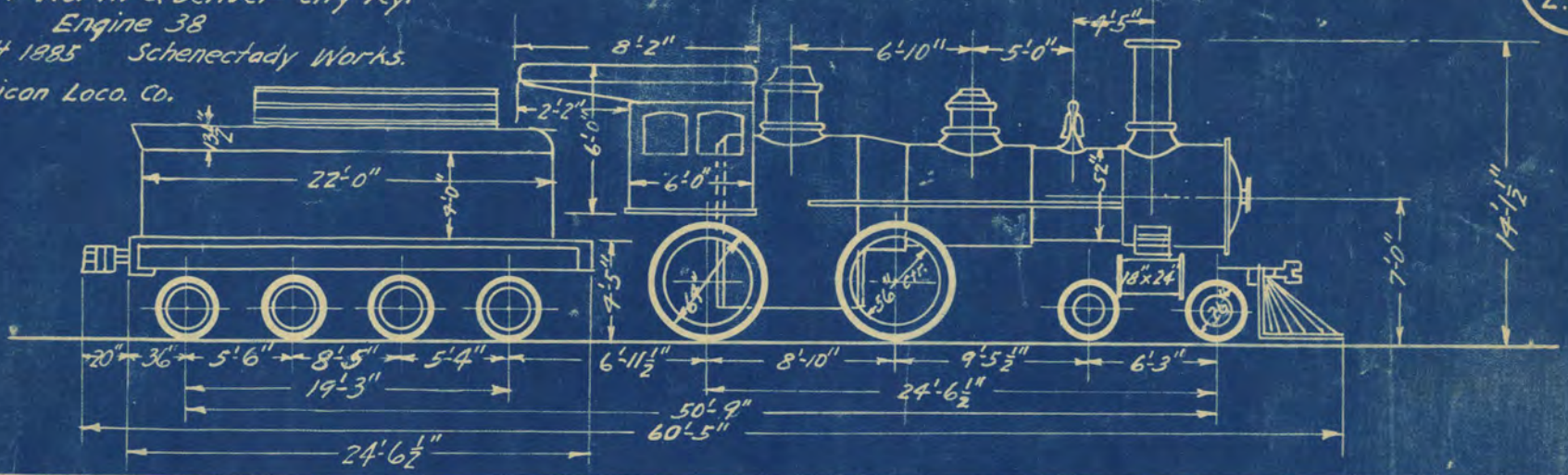
CLASS	ENGINES	WEIGHT WORKING ORDER	WEIGHT OF ENGINE	SIZE OF CYLINDER	WEIGHT ON DRIVERS	WHEEL CTR.	TRACTIVE POWER	FACTOR OF ADHES.	BOILER PRESS.	SQUARE FEET HEATING SURFACE					SQ. FT. GRATE AREA	BOILER TUBES			
										FIRE BOX	TUBES	FLUES	COMB. CHAMB.	TOTAL EVAPORATIVE		SUPER. HEAT	NUMBER	DIAM.	LENGTH
C-2-K	38	182,000 [#]	93,500 [#]	18"x24"	59,600 [#]	56"	15,491 [#]	3.8	150 [#]	123.	1148			1271.		15.8	201	2"	12'-5"
A-3-F	50-51	238,250 [#]	145,000 [#]	20"x26"	145,000 [#]	44"	34,666 [#]	4.13	200 [#]	177.	1778			1955.		31.3	311	2"	11'-0"
A-3-E1	60-67	227,050 [#]	141,700 [#]	19"x26"	141,700 [#]	44"	30,504 [#]	4.65	195 [#]	152.	1600			1752.		31.5	280	2"	11'-0"
A-3-E2	68-69	291,100 [#]	145,600 [#]	20"x26"	145,600 [#]	44"	33,800 [#]	4.31	195 [#]	152.	1605			1757.		31.5	280	2"	11'-0"
C-3-H	150-155	330,415[#]	173,175[#]	20"x28"	141,000[#]	60"	28,418[#]	4.26	200[#]	200.7	2873			3073.7		34.6	312	2"	14'-10"
C-3-H-1	157	342,400 [#]	187,700 [#]	21"x28"	146,500 [#]	62"	30,420 [#]	4.8	200 [#]	205.	2271			2476.		32.6	294	2"	14'-10"
B-4-O	201-211	292,750 [#]	158,000 [#]	20"x28"	142,000 [#]	50"	33,404 [#]	4.2	200 [#]	122.2	1877			1999.2		41.3	281	2"	14'-7"
B-4-Q	250	325,100[#]	175,000[#]	20"x28"	157,000[#]	50"	33,404[#]	4.7	200[#]	190.	2418.7			2608.7		32.5	328	2"	14'-2"
B-4-Q-1	264	329,500 [#]	185,000 [#]	20"x28"	165,000 [#]	50"	33,404 [#]	4.9	200 [#]	189.	1954			2143.		32.7	265	2"	14'-2"
B-4-R	302-305	343,500[#]	198,000[#]	22"x28"	119,000[#]	50"	40,418[#]	4.5	200[#]	195.	1556	642		2393.	508	34.6	219-34	2"x5 1/2"	13'-6"
B-4-R	301-309	346,354 [#]	200,854 [#]	22"x28"	180,795 [#]	50"	40,418 [#]	4.47	200 [#]	195.	1556	642		2393.	508	34.6	219-34	2"x5 1/2"	13'-6"
B-4-R-1	310-313	351,204 [#]	202,204 [#]	22"x28"	181,295 [#]	50"	40,418 [#]	4.48	200 [#]	209.	1405	604		2218.	477	32.7	200-32	2"x5 1/2"	13'-6"
B-4-R-1	-314	350,468 [#]	201,468 [#]	22"x28"	180,559 [#]	50"	40,418 [#]	4.47	200 [#]	209.	1405	604		2218.	477	32.7	200-32	2"x5 1/2"	13'-6"
E-4-A-1	401-410	448,000 [#]	274,000 [#]	27"x30"	214,300 [#]	56"	58,092 [#]	3.67	200 [#]	200.	2464	1024		3688.	834	54.2	200-34	2 1/4"x5 1/2"	21'-0"
E-4-A-2	451-455	489,500 [#]	319,500 [#]	27"x32"	238,500 [#]	56"	62,949 [#]	3.79	200 [#]	228.	2752	1226	51	4257.	993	70.3	247-45	2 1/4"x5 1/2"	19'-0"
E-4-A-3	456-460	502,575 [#]	320,075 [#]	28"x32"	240,075 [#]	56"	66,640 [#]	3.6	200 [#]	277.	2880	1200	69	4426.	1031	78.	264-45	2 1/4"x5 1/2"	18'-7 1/4"
E-4-A-4	461-463	524,355 [#]	327,755 [#]	28"x32"	243,485 [#]	56"	66,640 [#]	3.65	200 [#]	277.	2880	1200	69	4426.	1031	78.	264-45	2 1/4"x5 1/2"	18'-7 1/4"
E-4-A-4	464	531,235 [#]	334,635 [#]	28"x32"	247,235 [#]	56"	66,640 [#]	3.71	200 [#]	277.	2880	1200	69	4426.	1031	78.	264-45	2 1/4"x5 1/2"	18'-7 1/4"
E-4-A-4	465	531,045 [#]	334,445 [#]	28"x32"	248,685 [#]	56"	66,640 [#]	3.73	200 [#]	277.	2880	1200	69	4426.	1031	78.	264-45	2 1/4"x5 1/2"	18'-7 1/4"
F-3-A	501-504	401,925 [#]	236,815 [#]	25"x28"	153,815 [#]	62"	43,110 [#]	3.57	200 [#]	194.	1935	936		3065.	775	55.	157-32	2 1/4"x5 1/2"	21'-0"
F-3-A-1	551-555	507,075 [#]	296,775 [#]	27"x28"	182,875 [#]	66"	46,890 [#]	3.90	200 [#]	233.	2170	954.6	59	3416.6	797	58.7	200-36	2 1/4"x5 1/2"	18'-6"
F-3-A-2	556-557	511,250 [#]	300,950 [#]	27"x28"	186,860 [#]	66"	46,890 [#]	3.99	200 [#]	233.	2170	954.6	59	3416.6	797	58.7	200-36	2 1/4"x5 1/2"	18'-6"

REV. 3-13-23
 11-10-25
 AN. 1932

(2)

Fort Worth & Denver City Ry.
 Engine 38
 Built 1885 Schenectady Works.
 American Loco. Co.

2.

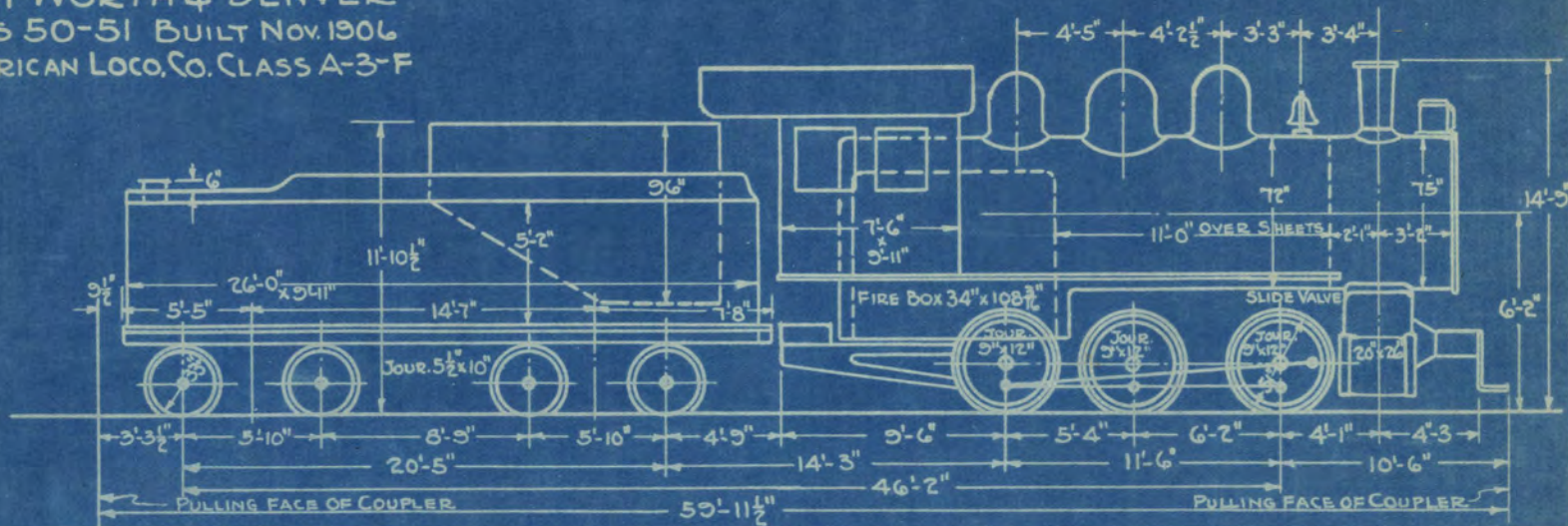


Length of Fire Box - Inside	72"	Heating Surface - Tubes	1148 Sq. Ft.	Weight on Drivers	59,600 Lbs.
Height " " " - Front	69"	" " " - Total	1271 Sq. Ft.	" " Eng. Truck	33,900 "
" " " " - Rear	69 1/2"	Grate Surface	15.8 " "	" of Total Eng.	93,500 "
Width " " " - Top	3'-4"	Boiler Pressure	150 Lbs.	" " Tender Loaded	88,500 "
" " " " at Grates	31 3/4"	Tractive Power	15491 Lbs.	" " Engine and	
Number of Flues . 2" dia.	201	Factor of Adhesion	3.8	tender in Working order	182,000 Lbs.
Length " " over sheets	12'-5"	Tender Capacity - (Oil)	2500 Gals.		
Heating Surface - Fire Box	123.05 Sq. Ft.	" " - Water	4000 Gals.		

REV 1. 1932

REVISED.
MAR. 1937

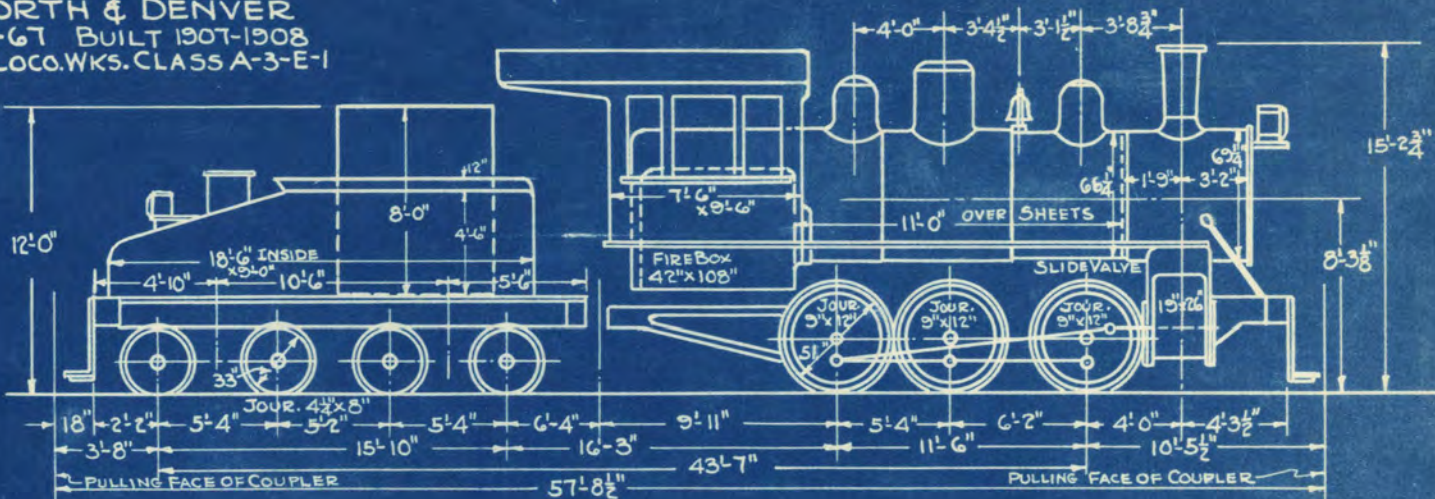
FORT WORTH & DENVER
ENG'S 50-51 BUILT NOV. 1906
AMERICAN LOCO. CO. CLASS A-3-F



FIRE BOX	177 SQ. FT.	VALVE GEAR	STEPHENSON	TRACTIVE POWER	WEIGHTS
TUBES 311-2" x 11'-0"	1778 " "	AIR PUMP	2- 5 1/2" WEST.	200# S.P.	TENDER EMPTY 59,400 LBS.
TOTAL	1955 " "	MAX. WIDTH (CAB)	9'-11"	34,666 LBS.	OIL 2600 GALS. 19,500 "
		GRATE AREA	31.3 SQ. FT.		WATER 8000 GALS. 66,600 "
		ADHESION	4.13		TOTAL 145,500 "
					WT. ON DRIVERS 145,000 "
					TOTAL ENGINE 145,000 "
					TOTAL ENG & TENDER 290,500 "

REVISED
 APRIL 1935
 MAY 1937
 JUNE 1941

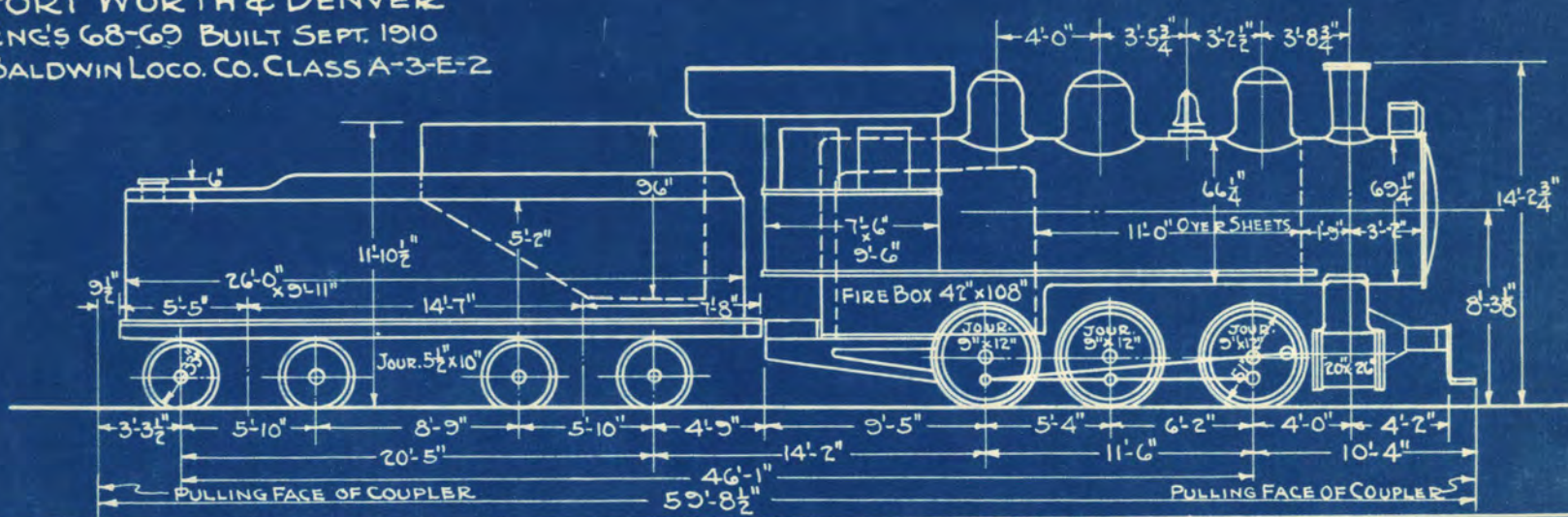
FORT WORTH & DENVER
 ENG'S. 60-67 BUILT 1907-1908
 BALDWIN LOCO. WKS. CLASS A-3-E-1



FIREBOX	152 SQ. FT.	VALVE GEAR	STEPHENSON	TRACTIVE POWER	WEIGHTS
TUBES	280-2" x 11'-0" 1600 SQ. FT.	AIR PUMP	2-9 1/2" WEST.	195 # S.F. 30,504 LBS.	TENDER EMPTY 40,180 LBS.
TOTAL	1752 SQ. FT.	MAXIMUM WIDTH (CAB)	9'-7"		OIL 1580 GAL'S. 11,850 LBS.
		GRATE AREA	31.55 SQ. FT.		WATER 4000 GAL'S. 33,320 LBS.
		ADHESION	4.65		TOTAL 85,350 LBS.
					WT. ON DRIVERS 141,700 LBS.
				SOLD ENG. 62-66	TOTAL ENG. 41,700 LBS.
				SCRAPPED 61-63-60-65	TOTAL ENG. & TENDER 227,050 LBS.

REVISED
MAR. 1937
JUNE 1941

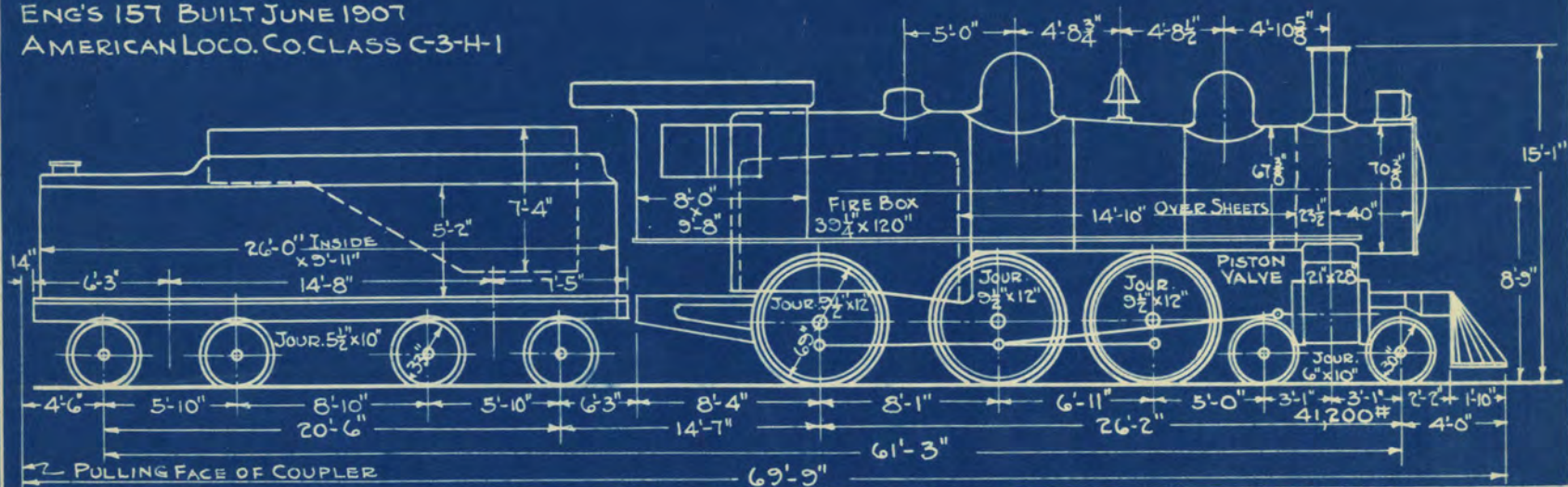
FORT WORTH & DENVER
ENG'S 68-69 BUILT SEPT. 1910
BALDWIN LOCO. CO. CLASS A-3-E-2



		VALVE GEAR		TRACTION POWER		WEIGHTS	
FIRE BOX	152 SQ. FT.	STEPHENSON		195# S.P.	33,800 LBS.	TENDER EMPTY	59,400 LBS.
TUBES 280-2" x 11'-0"	1605 " "	AIR PUMP	2-9 1/2" WEST.			OIL 2600 GAL'S.	19,500 "
TOTAL	1757 " "	MAX. WIDTH (CAB)	9'-6"			WATER 8000 GAL'S.	66,600 "
		GRATE AREA	31.55 SQ. FT.			TOTAL	145,500 "
		ADHESION	4.31			WT. ON DRIVERS	145,600 "
		POWER REVERSE	68 ALCO.			TOTAL ENGINE	145,600 "
						WT. ON DRIVERS 68 #	146,475
						TOTAL ENG. & TENDER	291,100 "

REVISED
MARCH 1937

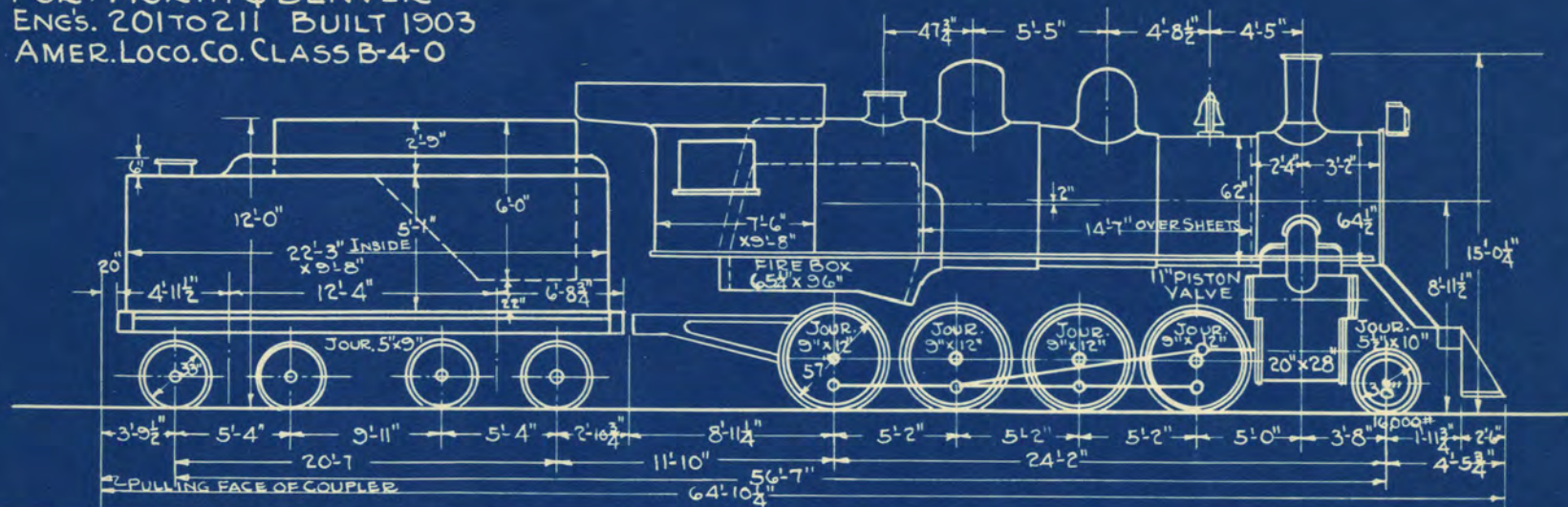
FORT WORTH & DENVER
ENG'S 157 BUILT JUNE 1907
AMERICAN LOCO. CO. CLASS C-3-H-1



FIRE BOX		VALVE GEAR		STEPHENSON		TRACTIVE POWER		WEIGHTS	
TUBES	294 2"x14'-10" 22TL. " "	AIR PUMP	8 1/2" c.c.	200# S.P.	30,420 LBS.	TENDER EMPTY	63,100 LBS.		
TOTAL	2,476. " "	MAX. WIDTH (CAB)	10'-2"			OIL	3,600 GAL'S.	27,000 "	
		GRATE AREA	32.65 SQ. FT.			WATER	800 GAL'S.	66,640 "	
		ADHESION	4.7			TOTAL		156,700 "	
						WT. ON DRIVERS		146,500 "	
						TOTAL ENGINE		187,700 "	
						TOTAL ENG. & TENDER		344,400 "	

REVISED
APRIL 1935

FORT WORTH & DENVER
ENG'S. 201 TO 211 BUILT 1903
AMER. LOCO. CO. CLASS B-4-0

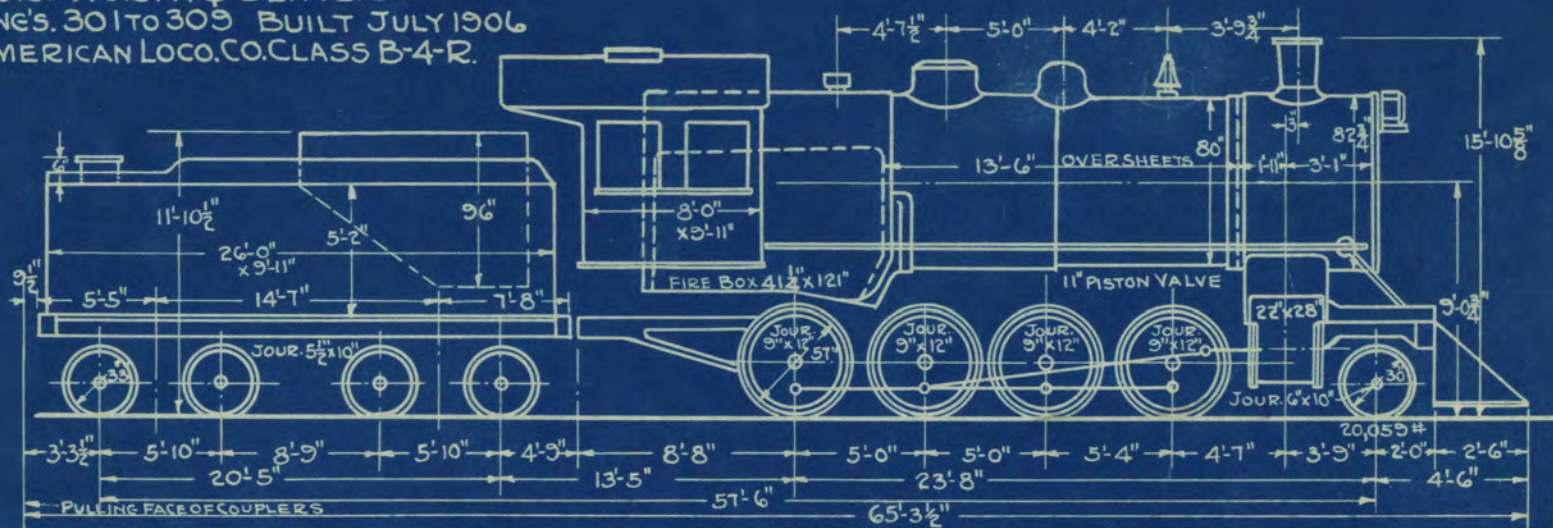


FIRE BOX		VALVE GEAR		TRACTIVE POWER		WEIGHTS	
TUBES 281 2"x14 1/2"	122.2 SQ.FT.	AIR PUMP	WALSCHAERT	200# SP.	33,404 LBS.	TENDER EMPTY	54,020 LBS.
TOTAL EVAPORATIVE	1877 " "	MAX. WIDTH (CAB)	WEST. 8 1/2" CC.			OIL 4100 GAL'S.	30,750 "
	1999.2 " "	GRATE AREA	9'-10"			WATER 6000 GAL'S.	49,980 "
		ADHESION	4.35 SQ.FT.			TOTAL	134,750 "
			4.2			WT. ON DRIVERS	142,000 "
						TOTAL ENGINE	158,000 "
				SOLD 203-204		TOTAL ENGINE & TENDER	292,750 "
				SCRAPPED 201-209-210			

REV 4-2-35

REVISED.
 APRIL 1935
 MAR. 1939

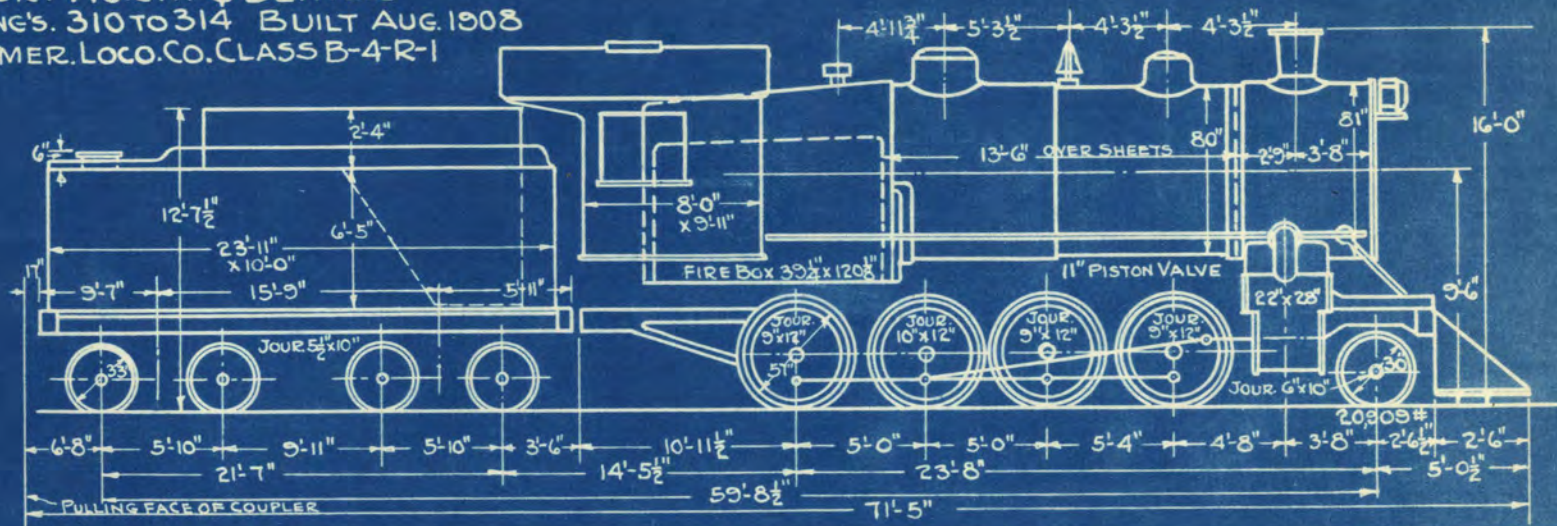
FORT WORTH & DENVER
 ENG'S. 301 TO 309 BUILT JULY 1906
 AMERICAN LOCO. CO. CLASS B-4-R.



FIRE BOX	195 SQ. FT.	VALVE GEAR	STEPHENSON	TRACTIVE POWER	WEIGHTS	
TUBES 219-2 1/2" x 13'-6"	1556 SQ. FT.	SUPERHEATER	SCHMIDT-"A"	200# S.P.	40,418 LBS.	TENDER EMPTY 59,360 LBS.
TUBES 34-5 1/2" x 13'-6"	642 " "	POWER REVERSE	ALCO.			OIL 2600 GAL'S. 19,500 "
TOTAL EVAPORATIVE	2393 " "	AIR PUMP-306-8-8 1/2" x 4 1/2"	304-9 1/2" x 5"	302-5-1-8 1/2" CC		WATER 8000 GAL'S. 66,640 "
SUPERHEATER	508 " "	MAX. WIDTH (CAB)	10'-0"			TOTAL 145,500 "
TOTAL COMBINED	2901 " "	GRATE AREA	34.6 SQ. FT.	SCRAPPED 301-303-307-309		WT. ON DRIVERS. 180,795 "
		ADHESION	4.47			TOTAL ENGINE 200,854 "
						TOTAL ENGINE & TENDER 346,354 "

REVISED
APRIL 1935
JUNE 1941

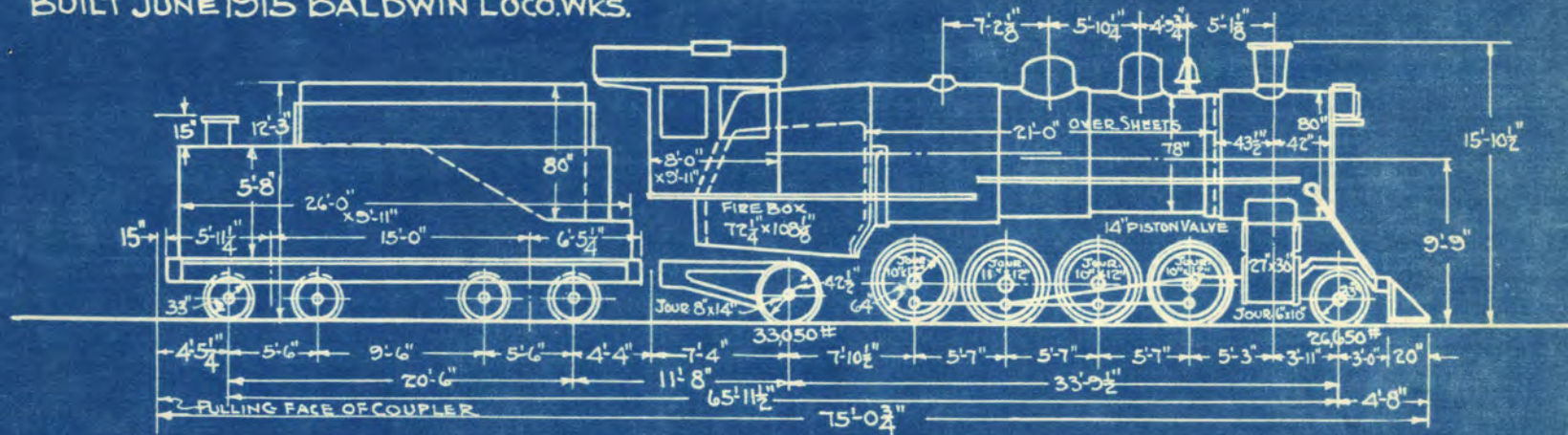
FORT WORTH & DENVER
ENG'S. 310 TO 314 BUILT AUG. 1908
AMER. LOCO. CO. CLASS B-4-R-1



FIRE BOX	209 SQ. FT.	VALVE GEAR	WALSCHAERT	TRACTIVE POWER	WEIGHTS			
TUBES 200-2"x13'-6"	1405 " "	SUPERHEATER	SCHMIDT "A"	200# S.P.	40,418 LBS.	TENDER EMPTY	55,360 LBS.	
TUBES 32-5 1/2"x13'-6"	604 " "	POWER REVERSE	310-313 ALCO.			OIL	3600 GALS.	27,000 "
TOTAL EVAPORATIVE	2218 " "	AIR PUMP	1-N95 & 1-9 1/2"			WATER	8000 GALS.	66,640 "
SUPERHEATER	477 " "	MAX. WIDTH (CAB)	10'-4"			TOTAL		149,000 "
TOTAL COMBINED	2695 " "	GRATE AREA	32.7 SQ. FT.			WT. ON DRIVERS		180,550 "
		ADHESION	4.48	WT. ON DRIVERS	310-313 181,295 LBS.	TOTAL ENGINE		201,468 "
				" OF ENGINE	" " 202,204 "	TOTAL ENGINE & TENDER		350,468 "

REVISED
MAR. 1937
JUNE 1941

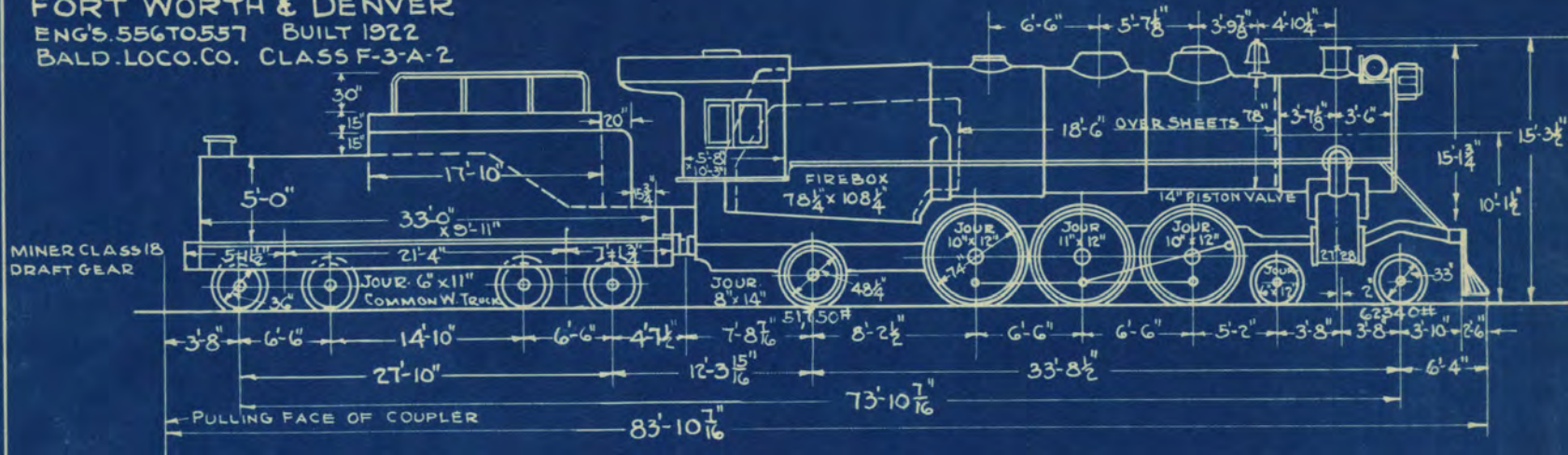
FORT WORTH & DENVER
ENG'S 401 TO 410 CLASS E-4-A-1
BUILT JUNE 1915 BALDWIN LOCO. WKS.



FIRE BOX		VALVE GEAR		TRACTIVE POWER		WEIGHTS	
TUBES 200-2 1/2 x 21-0	2464 " "	SUPERHEAT	WALSCHAERT	200# S.F.	58,092 LBS.	TENDER EMPTY	75,315 LBS.
TUBES 34-5 1/2 x 21-0	1024 " "	AIR PUMP	SCHMIDT			OIL 4050 GAL'S.	30,375 "
TOTAL EVAPORATIVE	3688 " "	MAXIMUM WIDTH (CAB)	1-8 1/2 CC. WEST.			WATER 8200 "	68,310 "
SUPERHEAT	834 " "	GRATE AREA	54.25 SQ. FT.			TOTAL	174,000 "
TOTAL COMBINED	4522 " "	ADHESION	3.67			WEIGHT ON DRIVERS	214,300 "
		POWER REVERSE	401-24561 ALCO			TOTAL WT. OF ENGINE	274,000 "
			408			WT. OF ENG. & TENDER	448,000 "

REVISED
 JAN. 1932
 JULY 1932
 MAR. 1937
 MAR. 1939

FORT WORTH & DENVER
 ENG'S. 556 TO 557 BUILT 1922
 BALD. LOCO. CO. CLASS F-3-A-2

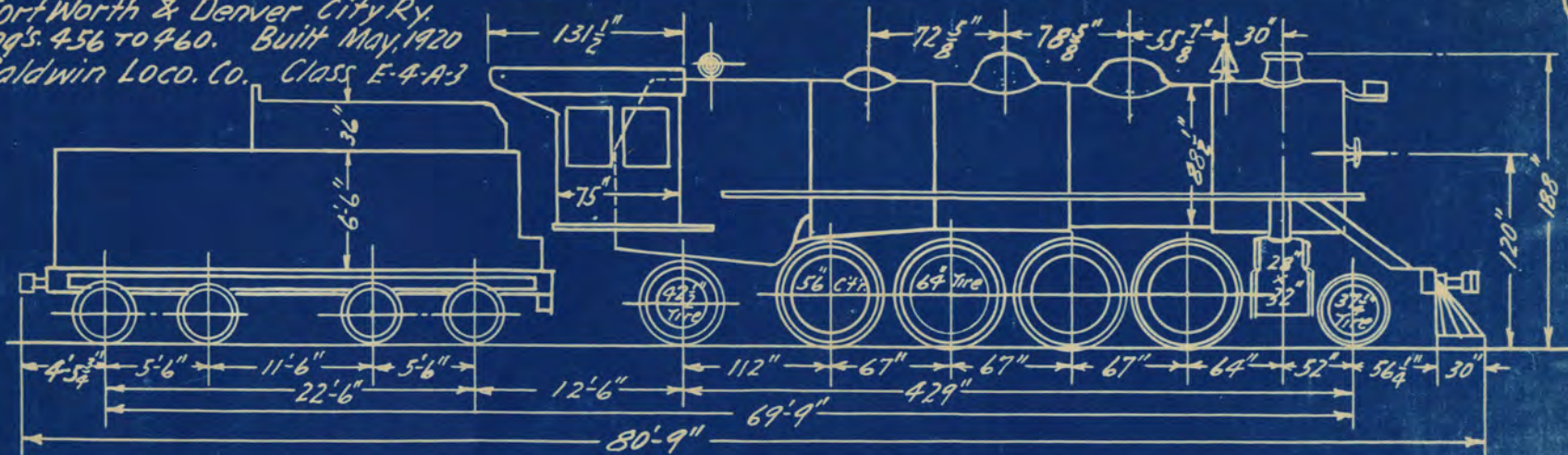


FIREBOX		VALVE GEAR - WALSCHAERT		TRACTIVE POWER		WEIGHTS	
TUBES - 200 2 1/4" x 18'-6"	2170.0 SQ. FT.	SUPERHEATER - SCHMIDT "A"		200# 27" x 28" CYL.	46,890 LBS.	TENDER EMPTY	97,000 LBS.
TUBES - 36 5 1/2" x 18'-6"	954.6 SQ. FT.	POWER REVERSE - RAGONNET				OIL - 4000 GAL'S.	36,000 LBS.
COMB. CHAMBER	59.0 SQ. FT.	AIR PUMP - 2-8 1/2" WEST. C.C.				WATER - 10000 GAL'S.	83,300 LBS.
TOTAL EVAPORATIVE	3416.6 SQ. FT.	FEEDWATER HEATER - ELESKO K-31				TOTAL	210,300 LBS.
SUPERHEATER	797.0 SQ. FT.	MAX. WIDTH OVER CAB HANDHOLDS 10'-11 3/4"				WT. ON DRIVERS	186,860 LBS.
TOTAL COMBINED	4213.6 SQ. FT.	ADHESION 3.99				TOTAL ENGINE	300,950 LBS.
		GRATE AREA 58.750 FT.				TOTAL ENG. & TENDER	511,250 LBS.

EY. 2-20-28
 REV. 12-8-28
 JULY 1932
 JUNE 1933

Fort Worth & Denver City Ry.
 Eng's. 456 to 460. Built May, 1920
 Baldwin Loco. Co. Class E-4-A-3

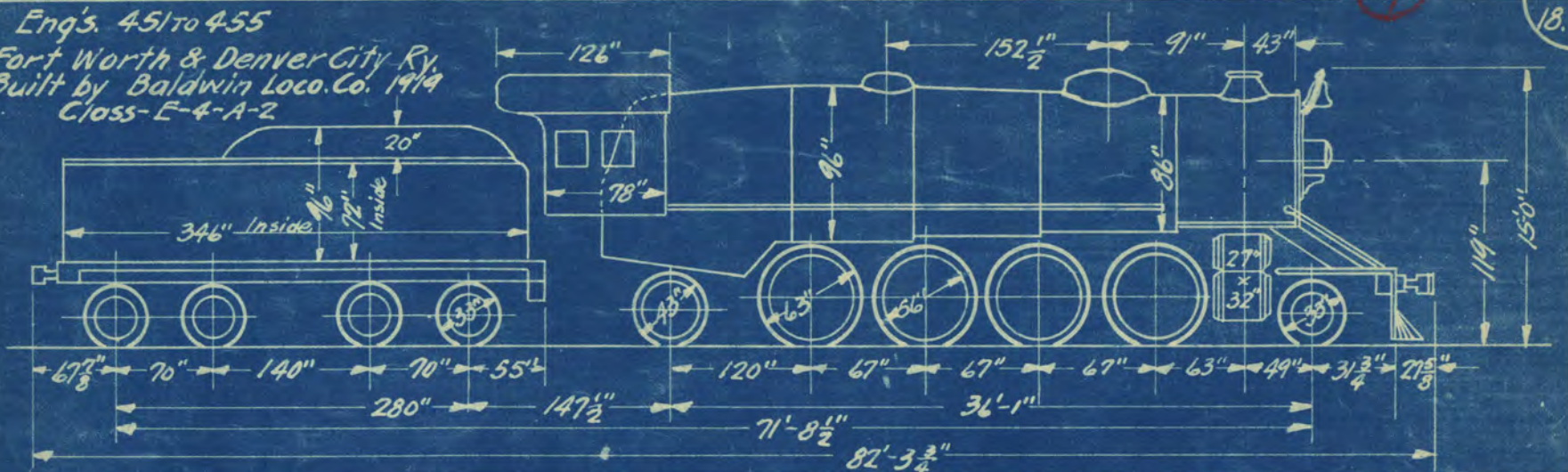
19.



Length of Firebox-Inside	116 ⁷ / ₈ "	Heating Surface 5 ¹ / ₂ " Flues	1200 Sq. Ft.	Tender Capacity-Water	10,100 Gal's.
Height " " Front	91 ¹ / ₂ "	" " Comb Chamber	69 "	Weight on Drivers	290,075 Lbs.
" " " Rear	76 ¹ / ₂ "	" " Total	4476 "	" " Eng. Truck	30,000 "
Width " " At Grates	96"	Superheating Surface	1031 "	" " Trailer Truck	50,000 "
Number " Flues 2 ¹ / ₂ " Dia.	264	Grate Area	78 "	" of Total Engine	320,075 "
" " " 5 ¹ / ₂ " Dia.	45	Boiler Pressure	200 Lbs.	" " Tender Loaded	182,500 "
Length over Flue Sheets	18 ¹ / ₂ "	Tractive Power	66,640 "	" " Eng. & Tender "	502,575 "
Heating Surface-Firebox	277 Sq. Ft.	Factor of Adhesion	3:60		
" " " 2 ¹ / ₂ " Flues	2880 "	Tender Capacity-oil	4300 Gal's.		

EV. 3-20-25
 12-8-28
 1-8-29
 JULY 1932

Eng's. 451 to 455
 Fort Worth & Denver City Ry.
 Built by Baldwin Loco. Co. 1919
 Class-E-4-A-2

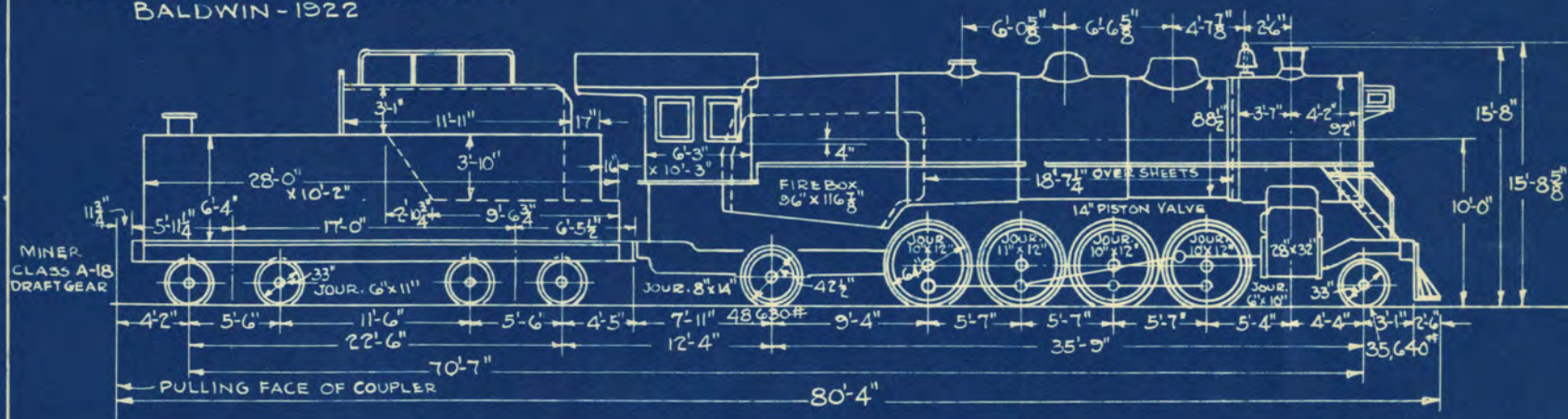


Length of Fire Box - Inside	120 3/4"	Heating Surface Comb. Cham	51 sq.ft.	Weight on Drivers	238,500#
Height " " " Front	90 3/4"	" " 2 1/4" Tubes	27.52 "	" " Engine Truck	26,000 #
" " " " Rear	68 5/8"	" " 5 1/2" "	1226 "	" " Trailer "	55,000 #
Width " " "	84 1/4"	Total	4257 "	Total Weight of Engine	319,500#
No. of Tubes 2 1/4" dia	247	Superheating Surface	993 "	Wt. of Tender Loaded	170,000 #
" " " 5 1/2" "	45	Grate Area	70.3 "	" " Eng. and Tender	
Length over Sheets	228"	Tractive Power	62,949#	in working order	489,500#
Boiler Pressure	200#	Factor of Adhesion	3.79	Tender Capacity - Water	10,000 gal's
Heating Surface Fire Box	228 3/4"	Tender Capacity - Oil	4300 gal's		

REV JULY 1932

REVISED
 JULY 1932
 APRIL 1935

FORT WORTH & DENVER
 ENGS. 461-463 CLASS E-4-A-4
 BALDWIN-1922

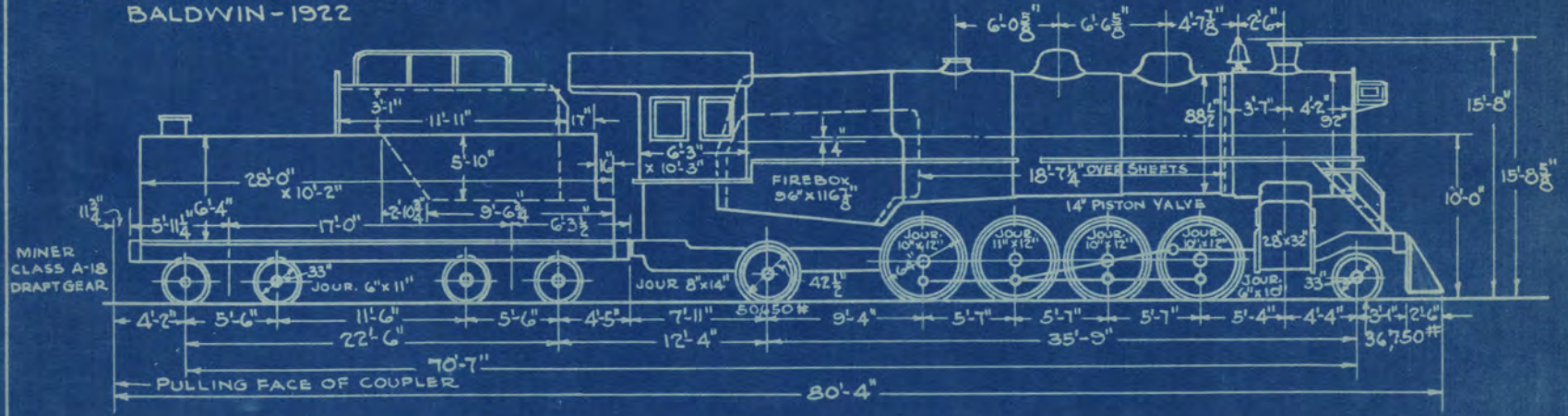


FIRE BOX		VALVE GEAR - WALSCHAERT		TRACTIVE POWER		WEIGHTS	
TUBES-264-2 1/2" x 18-7/8"	277.0 SQ.FT.	SUPERHEATER	SCHMIDT "A"	200# S.P.	66640 LBS.	TENDER EMPTY	80,260 LBS.
TUBES-45-5 1/2" x 18-7/8"	1200.0 SQ.FT.	POWER REVERSE	RAGONNET			OIL-4300 GALS.	32,207 LBS.
COMB. CHAMBER	69.0 SQ.FT.	AIR PUMP-	1-8 1/2" C.C. WEST.			WATER 10100 GALS.	84,133 LBS.
TOTAL EVAPORATIVE	4426.0 SQ.FT.	MAX. WIDTH- CAB-	10'-11"			TOTAL	196,600 LBS.
SUPERHEATER	1031.0 SQ.FT.	ADHESION	3.65			WT. ON DRIVERS	243,485 LBS.
TOTAL COMBINED	5457.0 SQ.FT.	GRATE AREA	78 SQ.FT.			TOTAL ENGINE	327,755 LBS.
						TOTAL ENG. & TENDER	524,355 LBS.

REV 2-25

DRAWN
 JULY 1932
 APRIL 1935
 MAR. 1937

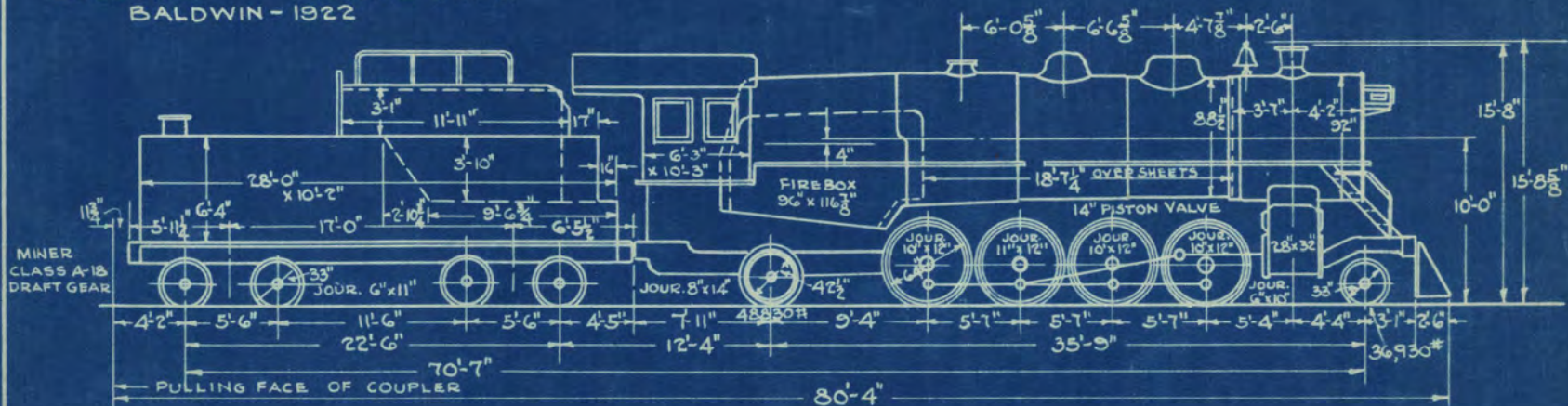
FORT WORTH & DENVER
 ENG'S. 464 CLASS E-4-A-4
 BALDWIN-1922



		TRACTIVE POWER		WEIGHTS	
FIREBOX	277.05 SQ. FT.	VALVE GEAR - WALSCHAERT		TENDER EMPTY	80,260 LBS.
TUBES-26 4/8" x 18-7/8"	2880.05 SQ. FT.	SUPERHEATER SCHMIDT "A"	200# S.R.	OIL- 4300 GAL'S.	32,207 LBS.
TUBES-45 5/8" x 18-7/8"	1200.05 SQ. FT.	POWER REVERSE RAGONNET		66,640 LBS.	
COMB. CHAMBER	65.05 SQ. FT.	AIR PUMP 1-8 1/2" C.C.			WATER 10100 GAL'S. 84,133 LBS.
TOTAL EVAPORATIVE	4426.05 SQ. FT.	MAX. WIDTH - CAB - 10'-11"			TOTAL 196,600 LBS.
SUPERHEATER	1031.05 SQ. FT.	ADHESION - 3.71			WT. ON DRIVERS 247,235 LBS.
TOTAL COMBINED	5457.05 SQ. FT.	GRATE AREA 78 SQ. FT.			TOTAL ENGINE 334,635 LBS.
		FEED WATER HEATER - WORTHINGTON			TOTAL ENG. & TENDER 531,235 LBS.

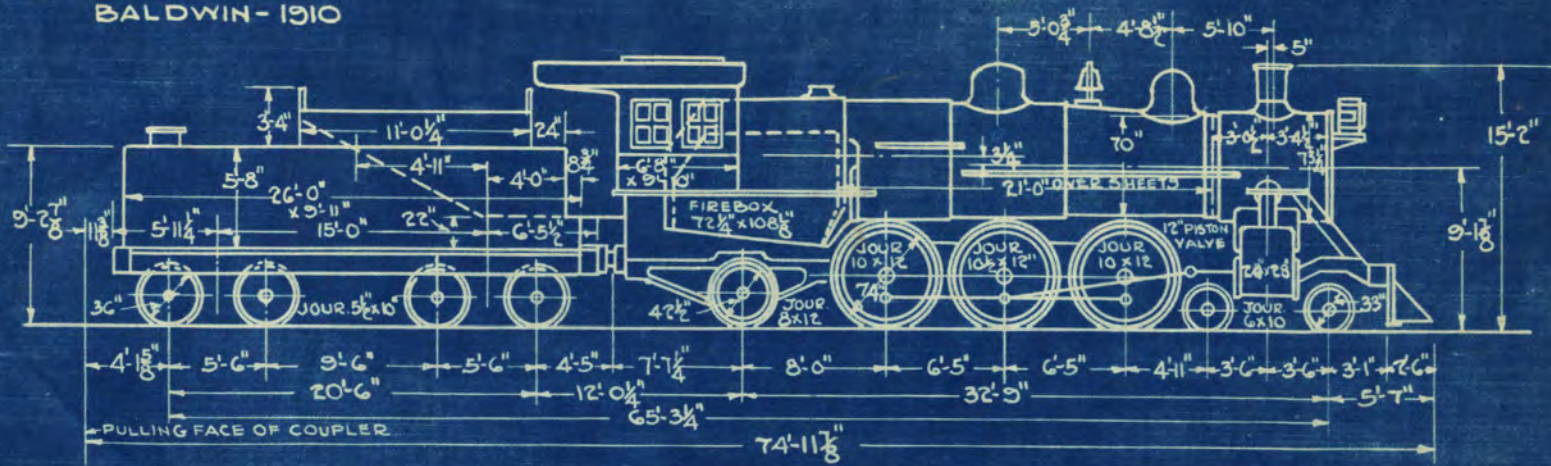
DRAWN
 JULY 1932
 APRIL 1935
 MAR. 1937

FORT WORTH & DENVER
 ENG'S 465 CLASS E-4-A-4
 BALDWIN - 1922



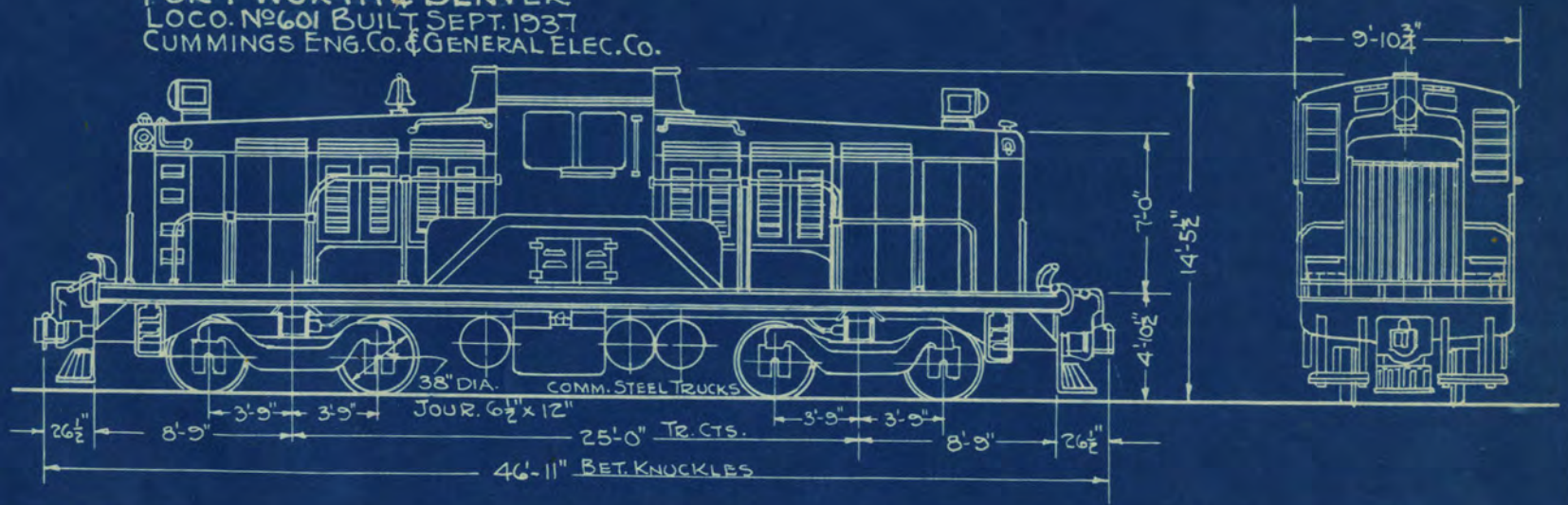
FIREBOX		VALVE GEAR - WALSCHAERT		TRACTIVE POWER		WEIGHTS	
TUBES-264 2 1/2" x 18-7/8"	2880.05Q.FT.	SUPERHEATER SCHMIDT "A"		200# S.P.	66,640 LBS.	TENDER EMPTY	80,260 LBS.
TUBES-45-5 1/2" x 18-7/8"	1200.05Q.FT.	POWER REVERSE RAGONNET				OIL-4300 GALS.	32,207 LBS.
COMB. CHAMBER	69.05Q.FT.	AIR PUMP 1-8 1/2" C.C.				WATER 10100 GALS.	84,133 LBS.
TOTAL EVAPORATIVE	4426.05Q.FT.	MAX WIDTH-CAB-10'-11"				TOTAL	196,600 LBS.
SUPERHEATER	1031.05Q.FT.	ADHESION - 3.73				WT. ON DRIVERS	248,685 LBS.
TOTAL COMBINED	5457.05Q.FT.	GRATE AREA 78.5Q.FT.				TOTAL ENGINE	334,445 LBS.
		FEED WATER HEATER-ELESCO				TOTAL ENG. & TENDER	531,045 LBS.

CHICAGO BURLINGTON & QUINCY
ENGINE 2932
BALDWIN - 1910



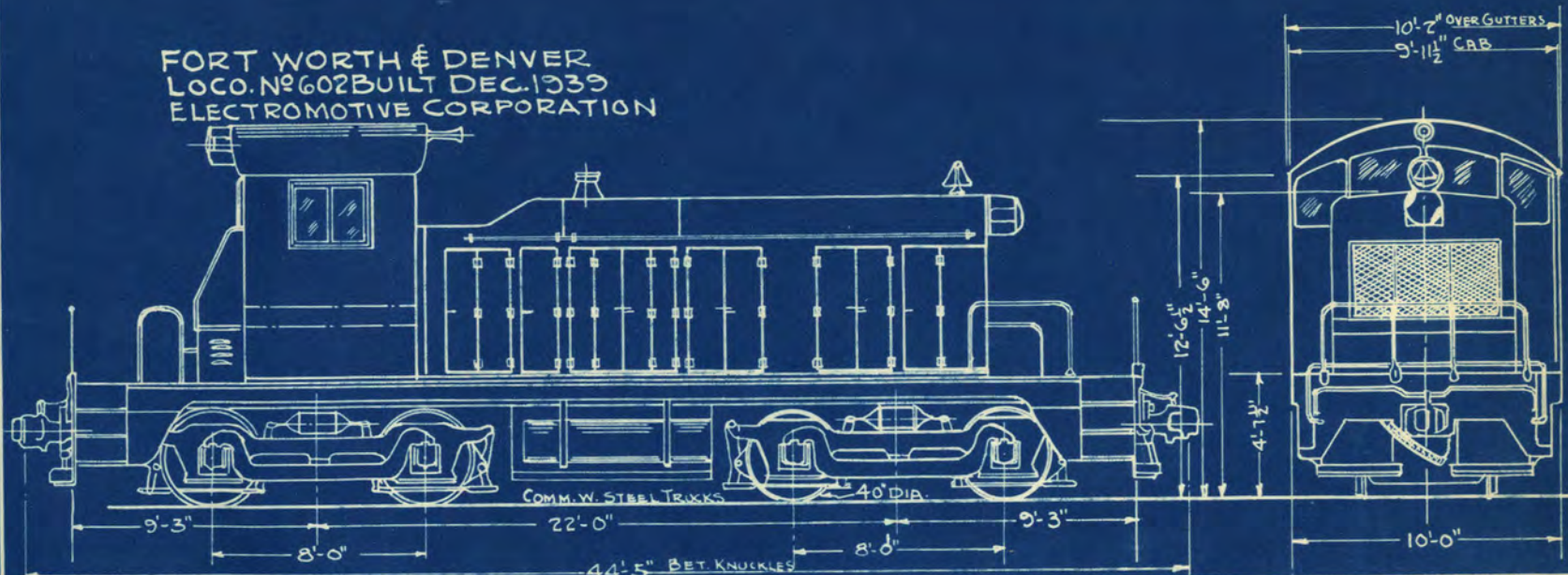
FIREBOX		TRACTIVE POWER		WEIGHTS	
TUBES 158-2 1/4 x 21'-0"	194.05 SQ. FT.	VALVE GEAR-WALSCHAERT	200" SP. 24" x 28" CYL. 37,000 LBS.	TENDER EMPTY	66000 LBS.
TUBES 30-5 1/2 x 21'-0"	207.75 SQ. FT.	SUPERHEATER-SCHMIDT-'A'		OIL	3028 GAL 22710 LBS.
ARCH TUBES 43 1/2 x 10'-2 1/4"	33.05 SQ. FT.	FEED WATER HEATER-WORTH. N#3		WATER	8200 GAL. 68300 LBS.
TOTAL EVAPORATIVE	3089.0 SQ. FT.	AIR PUMP 1-8 1/2 WEST. CC. #1-1 1/2 IN		TOTAL	
SUPERHEATER	757.05 SQ. FT.	MAX. WIDTH-CYLINDERS 10'-3"		WT. ON DRIVERS	164300 LBS.
TOTAL COMBINED	3846.05 SQ. FT.	GRATE AREA-54.2 SQ. FT.		TOTAL ENGINE	243000 LBS.
		ADHESION 4.44		TOTAL ENG & TENDER	400010 LBS.

FORT WORTH & DENVER
 LOCO. NO. 601 BUILT SEPT. 1937
 CUMMINGS ENG. CO. & GENERAL ELEC. CO.



ENGINE	GENERATOR	TRACTIVE POWER		FUEL -	600 GAL. SOIL.
ENGINE - 2 - 500 H.P.	2-GT-543 GENERATORS	STARTING	49,300 LBS.		
CUMMINGS 12 CYL. 4 CYCLE	R.P.M. 1000	10 M.P.H.	25,000 "		
CYLINDERS - 7" BORE 10" STROKE		20 M.P.H.	13,000 "		
4-TR. MOTORS TYPE GE-T16-E2	2-5K.W. AUX. GENERATORS	30 M.P.H.	8,500 "	SERIAL NO	100
2-VL-12 LOCOMOTIVE	2-COMPRESSORS TYPE W.W. 64 CU. FT.	40 M.P.H.	6,000 "	WT. ON DRIVERS -	197,200 LBS.

FORT WORTH & DENVER
 LOCO. NO 602 BUILT DEC. 1939
 ELECTROMOTIVE CORPORATION



ENGINE		GENERATOR		TRACTIVE POWER		FUEL	
ENGINE 1-600H.P.		E.M.C. TYPE D4 600 VOLTS		STARTING 48,900 LBS.		600 GALS OIL	
G.M.-MODEL 6-567-2 CYC.		TR. MOTORS 4 E.M.C. TYPE D-7-A		10 M.P.H. 18,100 "		MAIN RESV. PRESS. 120# IN. 130# OUT	
CYLINDERS 6- 8 1/2" X 10"		CONTROL EQUIP. E.M.C. 64 V.		20 M.P.H. 9,300 "		TRAIN LINE 70#	
		AIR BRAKE W.A.B Co. G-ET		30 " " "		BUILDER- ELECTRO. CORP.	
		AIR COMP. GARD. WKEKT (V.F.T.)		35 " " "		TOTAL WT. 195,600 LBS.	
BUILDERS NO 394						WT. ON DRIVERS 195,600 "	

**MINIMUM THICKNESS OF DRIVING AND TRAILER
TIRES
AS PROVIDED BY I.C.C. RULES**

DRIVING TIRES

USED ON ENGINES	DIAMETER OF WHEEL CENTER	THICKNESS OF TIRE FOR ROAD SERVICE	THICKNESS OF TIRE FOR SWITCH SERVICE
WICHITA VALLEY 8	44 INCHES	1 5/16 INCHES	1 3/16 INCHES
" " " " 11+13	56 "	1 7/16 "	1 5/16 "
F.W. & D. 24	46 "	1 5/16 "	1 3/16 "
" " " " 38	57 "	1 7/16 "	1 5/16 "
" " " " 39	57 "	1 1/2 "	1 3/8 "
" " " " 50+51	44 "	1 1/2 "	1 3/8 "
" " " " 60 TO 67	44 "	1 7/16 "	1 5/16 "
" " " " 68+69	44 "	1 1/2 "	1 3/8 "
" " " " 101 TO 105	56 "	1 1/2 "	1 3/8 "
" " " " 150 TO 155	60 "	1 11/16 "	1 9/16 "
" " " " 156+157	62 "	1 11/16 "	1 9/16 "
" " " " 201 TO 211	50 "	1 7/16 "	1 5/16 "
" " " " 250 TO 252	50 "	1 7/16 "	1 5/16 "
" " " " 253 TO 267	50 "	1 1/2 "	1 3/8 "
" " " " 301 TO 314	50 "	1 1/2 "	1 3/8 "
" " " " 401 TO 410	56 "	1 5/8 "	1 1/2 "
" " " " 451 TO 455	56 "	1 3/4 "	1 5/8 "
" " " " 456 TO 465	56 "	1 3/4 "	1 5/8 "
" " " " 501 TO 505	62 "	1 13/16 "	1 11/16 "
" " " " 551 TO 557	66 "	1 7/8 "	1 3/4 "

TRAILER TIRES

USED ON ENGINES	DIAMETER OF WHEEL CENTER	THICKNESS OF TIRE FOR ROAD SERVICE	THICKNESS OF TIRE FOR SWITCH SERVICE
F.W. & D. 401 TO 410	36 INCHES	1 5/16 INCHES	1 3/16 INCHES
" " " " 451 TO 455	36 "	1 9/16 "	1 7/16 "
" " " " 456 TO 463+465	36 "	1 1/2 "	1 3/8 "
" " " " 464	36 "	1 9/16 "	1 7/16 "
" " " " 501 TO 505	36 "	1 3/8 "	1 1/4 "
" " " " 551 TO 555	42 "	1 1/2 "	1 3/8 "
" " " " 556 TO 557	42 "	1 9/16 "	1 1/16 "

REV. 9-20-27

F.W. & D.C. RY.
OFFICE OF MASTER MECHANIC,
CHILDRESS, TEXAS, NOV. 30, 1923.

TIRE CHART

F.W. & D. + N.V. LOCOMOTIVES

DRAWN	TRACED	CHECKED	APPROVED	NUMBER
JST	JST	BST	W.A.P.	1023-R.R.V.

Classification And Description of Locomotive Equipment. T. & B. V. R.R.

Engine No	Size of Cylinder	Builder	Date Built	Wheel Centre	Diameter of Small Ring of Boiler	Fire Box		Grate Area Sq Ft	Flues			Heating Surface Square Feet		Steam Pressure Pounds	Wheel Base			Weight Loaded			Sign	
						Length	Width		Dia	Length	Number	Flues Box	Total		Driving	Total Eng	Total Eng & Tender	On Drivers	Total Engine	Total Eng & Tender		
22	20x24	Rhode Island	No Rec	44"	61"	108"	33"	24.7	2"	13.7	242	1710	142	1852	150	15.0	22.7	51.3"	127300	138300	244400	Non
23	20x24	Rhode Island	No Rec	44"	61"	108"	33"	24.7	2"	13.7	242	1710	142	1852	150	15.0	22.7	56.6"	127300	138300	272800	Non
25	20x24	Baldwin	No Rec	44"	62"	108"	33"	24.7	2"	13.7	242	1710	142	1852	160	15.0	22.7	56.2"	127300	138300	268800	Non
27	18x26	Schenectady	1903	60"	59"	77 1/2"	33"	17.7	2"	12.6	263	1710	166	1876	175	14.11	25.3	54.10	102500	136600	263400	Air
28	18x26	Schenectady	1903	60"	59"	77 1/2"	33"	17.7	2"	12.6	263	1710	166	1876	175	14.11	25.3	54.8	102500	136600	263500	Air
29	18x26	Schenectady	1903	60"	59"	77 1/2"	33"	17.7	2"	12.6	263	1710	166	1876	175	14.11	25.3	52.2	102500	136600	258200	Air
30	18x26	Schenectady	1903	60"	59"	77 1/2"	33"	17.7	2"	12.6	263	1710	166	1876	175	14.11	25.3	52.4	102500	136600	264100	Air
31	18x26	Schenectady	1903	60"	59"	77 1/2"	33"	17.7	2"	12.6	263	1710	166	1876	175	14.11	25.3	52.0	102500	136600	260000	Air
32 to 39	20x28	Baldwin	1907	50"	66"	120 1/8"	39 1/4"	32.7	2"	14.2	265	1967	202	2169	200	16.0	24.6	59.9	161300	181300	323300	Non
40	20x28	Baldwin	1907	50"	66"	120 1/8"	39 1/4"	32.7	2"	14.2	265	1967	202	2169	200	16.0	24.6	59.9	161300	181300	321550	Non
41	20x28	Baldwin	1907	50"	66"	120 1/8"	39 1/4"	32.7	2"	14.2	265	1967	202	2169	200	16.0	24.6	59.9	161300	181300	323300	Non
42	20x28	American	1907	50"	66"	120 1/8"	39 1/4"	32.7	2"	14.2	265	1967	202	2169	200	16.0	24.6	59.9	161300	181300	321150	Non
43 to 46	20x28	American	1907	50"	66"	120 1/8"	39 1/4"	32.7	2"	14.2	265	1967	202	2169	200	16.0	24.6	59.9	161300	181300	323300	Non
47	21x28	Baldwin	1907	62"	66"	120 1/8"	39 1/4"	32.7	2"	14.10	294	2270	194	2464	200	15.0	26.2	60.0"	145250	187450	326050	Air
48	21x28	Baldwin	1907	62"	66"	120 1/8"	39 1/4"	32.7	5 1/2"	13.11"	26	1701	194	1895	200	15.0	26.2	60.0"	145250	187450	329450	Air
49 to 51	21x28	Baldwin	1907	62"	66"	120 1/8"	39 1/4"	32.7	2"	14.10	294	2270	194	2464	200	15.0	26.2	60.0	145250	187450	329450	Air
52	20x26	Baldwin	1904	56"	60"	120"	33"	27.5	2"	13.11	269	1948	180	2128	175	14.0	25.0	58.1"	122500	142200	276700	Air
53 to 54	20x26	Baldwin	1904	56"	60"	120"	33"	27.5	2"	13.11	269	1948	180	2128	175	14.0	25.0	58.8"	122500	142200	284200	Air
55	20x26	Baldwin	1904	56"	60"	120"	33"	27.5	2"	13.11	269	1948	180	2128	175	14.0	25.0	58.8"	122500	142200	276700	Air
56	20x26	Baldwin	1904	56"	60"	120"	33"	27.5	2"	13.11	269	1948	180	2128	175	14.0	25.0	58.5"	122500	142200	284200	Air
57	20x28	Baldwin	1907	50"	66"	120 1/8"	39 1/4"	32.7	2"	14.2	265	1967	202	2169	200	16.0	24.6	59.9"	161300	181300	323300	Non

"Note" Engine 48 Superheated October 1923

Office of S.M.P.

Classification And Description of Locomotive Equipment. T. & B. V. R.R.

Loc No	Grate Area Sq Ft	Flues			Heating Surface Square Feet			Steam Pressure Pounds	Wheel Base			Weight Loaded			Signal	Heat	Capacity of Tank		Service	Type	Tractive Power	Class
		Dia	Length	Number	Flues	Fire Box	Total		Driving	Total Eng	Total Eng & Tender	On Drivers	Total Engine	Total Eng & Tender			Water	Oil				
33"	24.7"	2"	13.7"	242	1710	142	1852	150	15.0"	22.7"	51.3"	127300	138300	244400	None	None	4700	1940	Freight	Consol	25600	B4K
33"	24.7"	2"	13.7"	242	1710	142	1852	150	15.0"	22.7"	56.6"	127300	138300	272800	None	None	7000	2300	Freight	Consol	25600	B4K
33"	24.7"	2"	13.7"	242	1710	142	1852	160	15.0"	22.7"	56.2"	127300	138300	268800	None	None	6000	2500	Freight	Consol	25600	B4K
33"	17.7"	2"	12.6"	263	1710	166	1876	175	14.11"	25.3"	54.10"	102500	136600	263400	Air	Steam	6000	2500	Pass	10 Wheel	18734	C3D
33"	17.7"	2"	12.6"	263	1710	166	1876	175	14.11"	25.3"	54.8"	102500	136600	263500	Air	Steam	7000	2156	Pass	10 Wheel	18734	C3D
33"	17.7"	2"	12.6"	263	1710	166	1876	175	14.11"	25.3"	52.2"	102500	136600	258200	Air	Steam	5500	2300	Pass	10 Wheel	18734	C3D
33"	17.7"	2"	12.6"	263	1710	166	1876	175	14.11"	25.3"	52.4"	102500	136600	264100	Air	Steam	6000	2646	Pass	10 Wheel	18734	C3D
33"	17.7"	2"	12.6"	263	1710	166	1876	175	14.11"	25.3"	52.0"	102500	136600	260000	Air	Steam	7000	1960	Pass	10 Wheel	18734	C3D
39 1/4"	32.7"	2"	14.2"	265	1967	202	2169	200	16.0"	24.6"	59.9"	161300	181300	323300	None	None	8000	2643	Freight	Consol	33400	B4Q1
39 1/4"	32.7"	2"	14.2"	265	1967	202	2169	200	16.0"	24.6"	59.9"	161300	181300	321550	None	None	8000	2448	Freight	Consol	33400	B4Q1
39 1/4"	32.7"	2"	14.2"	265	1967	202	2169	200	16.0"	24.6"	59.9"	161300	181300	323300	None	None	8000	2643	Freight	Consol	33400	B4Q1
39 1/4"	32.7"	2"	14.2"	265	1967	202	2169	200	16.0"	24.6"	59.9"	161300	181300	321150	None	None	8000	2410	Freight	Consol	33400	B4Q1
39 1/4"	32.7"	2"	14.2"	265	1967	202	2169	200	16.0"	24.6"	59.9"	161300	181300	323300	None	None	8000	2643	Freight	Consol	33400	B4Q1
39 1/4"	32.7"	2"	14.10"	294	2270	194	2464	200	15.0"	26.2"	60.0"	145250	187450	326050	Air	None	8000	2400	Freight	10 Wheel	30240	C3H1
39 1/4"	32.7"	5 1/2"	13.11"	162	1701	194	1895	200	15.0"	26.2"	60.0"	145250	187450	329450	Air	Steam	8000	2643	Freight	10 Wheel	30240	C3H1
39 1/4"	32.7"	2"	14.10"	294	2270	194	2464	200	15.0"	26.2"	60.0"	145250	187450	329450	Air	Steam	8000	2643	Freight	10 Wheel	30240	C3H1
33"	27.5"	2"	13.11"	269	1948	180	2128	175	14.0"	25.0"	58.1"	122500	142200	276700	Air	Steam	7000	2300	Pass	10 Wheel	25257	C3H
33"	27.5"	2"	13.11"	269	1948	180	2128	175	14.0"	25.0"	58.8"	122500	142200	284200	Air	Steam	8000	2643	Freight	10 Wheel	25257	C3H
33"	27.5"	2"	13.11"	269	1948	180	2128	175	14.0"	25.0"	58.8"	122500	142200	276700	Air	Steam	7000	2300	Freight	10 Wheel	25257	C3H
33"	27.5"	2"	13.11"	269	1948	180	2128	175	14.0"	25.0"	58.5"	122500	142200	284200	Air	Steam	8000	2643	Freight	10 Wheel	25257	C3H
39 1/4"	32.7"	2"	14.2"	265	1967	202	2169	200	16.0"	24.6"	59.9"	161300	181300	323300	None	None	8000	2643	Freight	Consol	33400	B4Q1